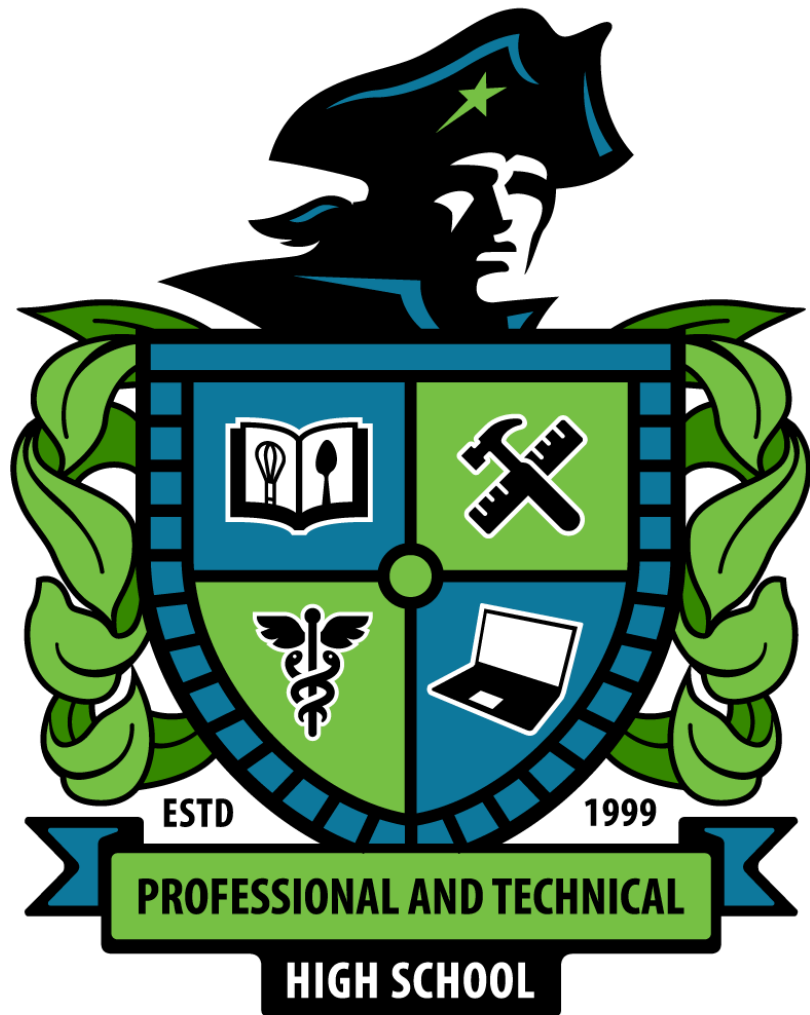


**WELCOME
PATRIOTS!**

**FRESHMAN SUMMER
ORIENTATION**



COUNSELOR/ ACADEMIC INFORMATION

FRESHMAN SUMMER
ORIENTATION

STAY CONNECTED!

Student Remind:

@paths27

Parent Remind:

@1234PATHS

Tell people to text @1234paths to the number 81010

They'll receive a welcome text from Remind.

If anyone has trouble with 81010, they can try texting @1234paths to (484) 241-4261.



Counseling
Department

Amy Shiver

SCHOOL COUNSELOR, A-L, 9-11 GR.
AMY.SHIVER@OSCEOLASCHOOLS.NET
BUILDING 5, ROOM 114, EXT. 15302



Charonn Mesidor

SCHOOL COUNSELOR, M-Z, 9 GR.
CHARONN.MESIDOR@OSCEOLASCHOOLS.NET
BUILDING 5. ROOM 114 , EXT. 15301

Molly Crotty

SCHOOL COUNSELOR, 12TH GR.
COLLEGE & CAREER COUNSELOR
MORGANA.CROTTY@OSCEOLASCHOOLS.NET
BUILDING 5, ROOM 114, EXT. 15304



School Phone: 407-518-5407

To Join Remind: text 81010 with the class code below
@paths27, @paths26, @paths25, @paths24

FLORIDA GRADUATION REQUIREMENTS

- **24 Credits**

- 4 English
- 4 Math (Including Algebra I and Geometry)
- 3 Science (Including Biology)
- 3 Social Studies (Including World & US History, Government & Economics)
- 1 Fine/Practical Art
- 1 PE
- 8 Electives (Including Financial Literacy)

- **2.0 or greater GPA (C average)**

- **State Exams**

- Pass Algebra I EOC
- Pass 10th ELA FAST exam
- Take Geometry, Biology, US History EOC

Planning for College TIP:

World Language is not required for HS Graduation....BUT it IS required for College Admission and scholarships.

Need 2 consecutive years in the same language

DIPLOMA DESIGNATIONS

SCHOLAR DIPLOMA DESIGNATION

- 2 Credits Higher Level Math
 - Algebra II, Statistics, or equally rigorous math course
- 2 Credits Higher Level Science
 - Chemistry or Physics and one equally rigorous science course
- 2 Credits in same World Language
- 1 Credit in AP, IB or DE course
- Pass all EOC Exams: Geometry, Biology, US History

MERIT DIPLOMA DESIGNATION

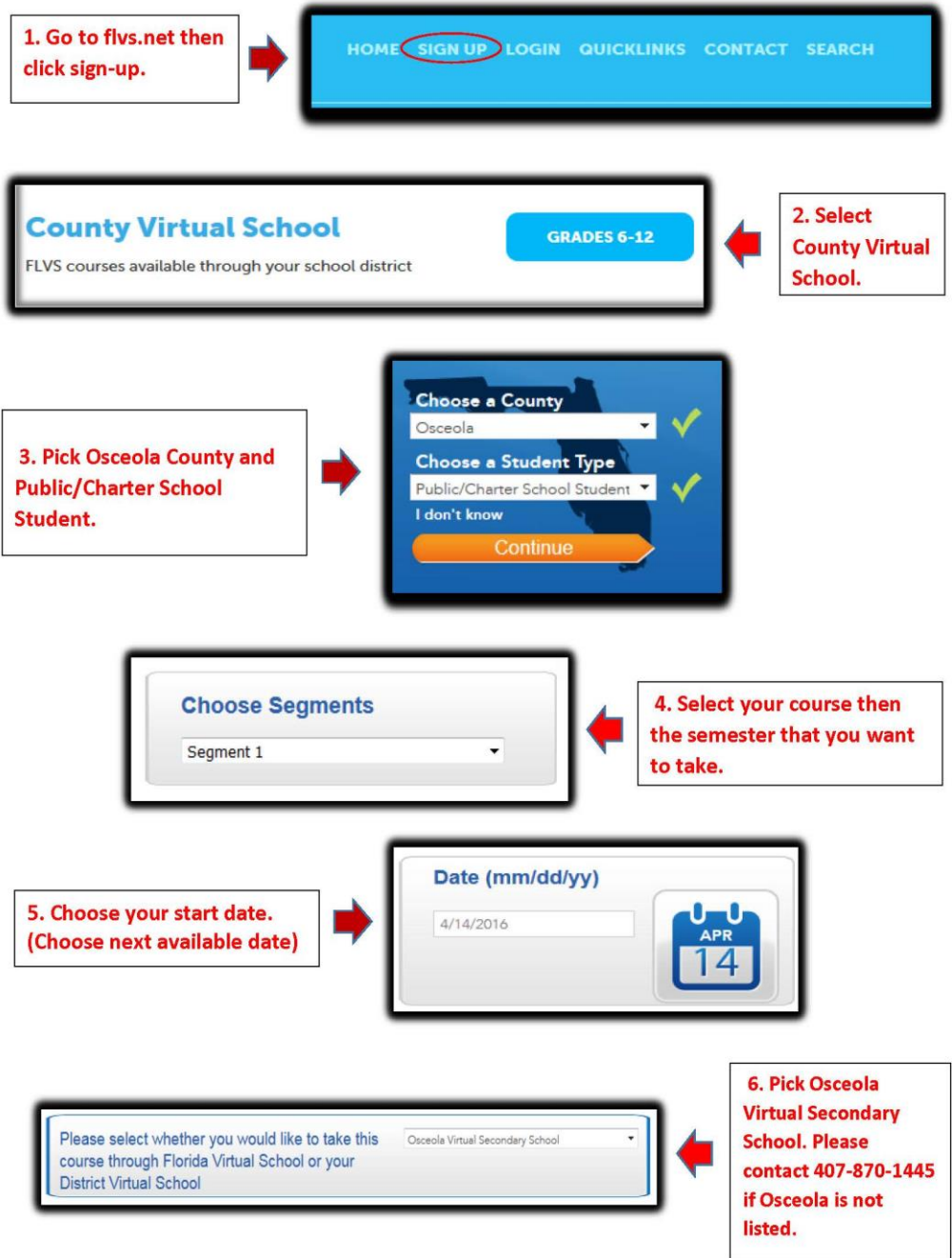
- Earns one or more industry certifications

BILITERACY SEAL

- Earn 4 credits in the same language and pass FAST with a 4 or higher
- OR
- Pass AP Exam with 3 or higher

OSCEOLA VIRTUAL SCHOOL

- Some popular options:
 - Driver's Education
 - Peer Counseling
 - HOPE
- Students must speak to their School Counselor for approval when signing up for a class.



COLLEGE DUAL- ENROLLMENT

- Take college classes FOR FREE! Including tuition and textbooks!
 - Replace your high school requirements with college classes!
 - Qualifying Requirements:
 - GPA 3.0 or higher
 - Take and pass all three sections of PERT Exam
 - Complete a Valencia DE application.
 - DE application Window: TBD (October 2023)
 - Next PERT Exam: TBD
- Application window and PERT testing is available each semester at PATHS. See your counselor or pay attention to school announcements for important information.



CAREER DUAL-ENROLLMENT



- Career Certification Programs for FREE!!!
- Considerations for Career Program Eligibility:
 - High GPA
 - Passing Graduation Test Requirements
 - Good Attendance
 - Discipline History
 - Current Status of Graduation Requirements
- Career Program Selection Process: 10th Grade Year
 - For Program Information:
[Osceola Technical College \(oTECH\) / Homepage \(osceolaschools.net\)](http://osceolaschools.net)

COMMUNITY SERVICE HOURS

Volunteer hours are NOT required for graduation, but they are HIGHLY recommended.

Can include assisting at non-profit organizations/charities during student's own time including after school and weekends.

Bright Futures Volunteer Service Packet needed

- Site/Proposal must be approved by student's counselor.

NEW! Students are now able to turn in paid work hours (with paycheck stubs) to replace community service hours.

Community Service for Florida Bright Futures Scholarship

- **COMMUNITY SERVICE** is defined as identifying a social issue in the community. This requires students to look beyond themselves and reach out to an issue faced by our society today (i.e. poverty, abuse, elderly rights, etc.). These hours will meet the requirement for the Bright Futures scholarships.

- Florida Academic Scholarship – 100 hours
- Florida Medallion Scholarship – 75 hours
- Florida Gold Seal Vocational Scholarship – 30 hours
- Florida Gold Seal CAPE Scholarship – 30 hours

See your School Counselor for a community service proposal or visit our school website at <https://www.osceolaschools.net/Page/8177>

COMMUNITY SERVICE OPPORTUNITIES (SOME EXAMPLES)

Goodwill Industries

Habitat for Humanity

Humane Society

Make a Wish Foundation

March of Dimes

Gift for Teaching


Give Kids the World

Elementary & Middle Schools

Big Brother/Sister

American Red Cross

HOW TO READ YOUR SCHEDULE IN FOCUS

0 Classes 

Full Year
Semester 1
Semester 2
1st 9 Weeks
2nd 9 Weeks
3rd 9 Weeks
4th 9 Weeks

Delete <input type="checkbox"/>	Course	Period - Teacher	Course Number	Section	Meeting Days	Room	Term
	AP PSYCH	Period 1 - S2 - 0112C - CHRISTOPHER ALAN ZUREWICH	21073500	0112C	MTWHF	P-1089	Semester 2
	PSYCH 1	Period 1 - Q1 - 0111C - CHRISTOPHER ALAN ZUREWICH	21073000	0111C	MTWHF	P-1089	1st 9 Weeks
	PSYCH 2	Period 1 - Q2 - 0111C - CHRISTOPHER ALAN ZUREWICH	21073100	0111C	MTWHF	P-1089	2nd 9 Weeks
	GEO HON	Period 2 - S1 - 001 - KYLE ANTHONY BRINKER	12063200	001	MTWHF	P-321	Semester 1
	PERS_CAR_SCH_DEV 1	Period 2 - Q3 - 0332C - DIANA MARIA VERGARA	05005000	0332C	MTWHF	5-103	3rd 9 Weeks
	Financial Literacy New Course	Period 2 - Q4 - 002 - DIANA MARIA VERGARA	FinLit	002	MTWHF	5-103	4th 9 Weeks
	ANAT PHYSIO HON	Period 3 - S1 - 0331C - ESPERANZA FIRPO	2000360	0331C	MTWHF	5-102	Semester 1
	ALG 2 HON	Period 3 - S2 - 001 - KYLE ANTHONY BRINKER	12003400	001	MTWHF	P-321	Semester 2
	GREAT BOOKS HON	Period 4 - S1 - 007 - BERNADETTE SHEREE MONROE	10208600	007	MTWHF	5-113B	Semester 1
	ENG HON 1	Period 4 - S2 - 006 - BERNADETTE SHEREE MONROE	10013201	006	MTWHF	5-113B	Semester 2
	+ Add a Section						

CHANGE YOUR SCHEDULE VIEW WITH TABS

Full Year

Semester 1

Semester 2

Period - Teacher

Course Number

[Period 1 - Q1 - 0111C - CHRISTOPHER ALAN ZUREWICH](#)

21073000

[Period 2 - S1 - 001 - KYLE ANTHONY BRINKER](#)

12063200

[Period 3 - S1 - 0331C - ESPERANZA FIRPO](#)

2000360

[Period 4 - S1 - 007 - BERNADETTE SHEREE MONROE](#)

10208600

[+ Add a Section](#)

Full Year

Semester 1

Semester 2

Period - Teacher

Course Number

[Period 1 - S2 - 0112C - CHRISTOPHER ALAN ZUREWICH](#)

21073500

[Period 2 - Q3 - 0332C - DIANA MARIA VERGARA](#)

05005000

[Period 3 - S2 - 001 - KYLE ANTHONY BRINKER](#)

12003400

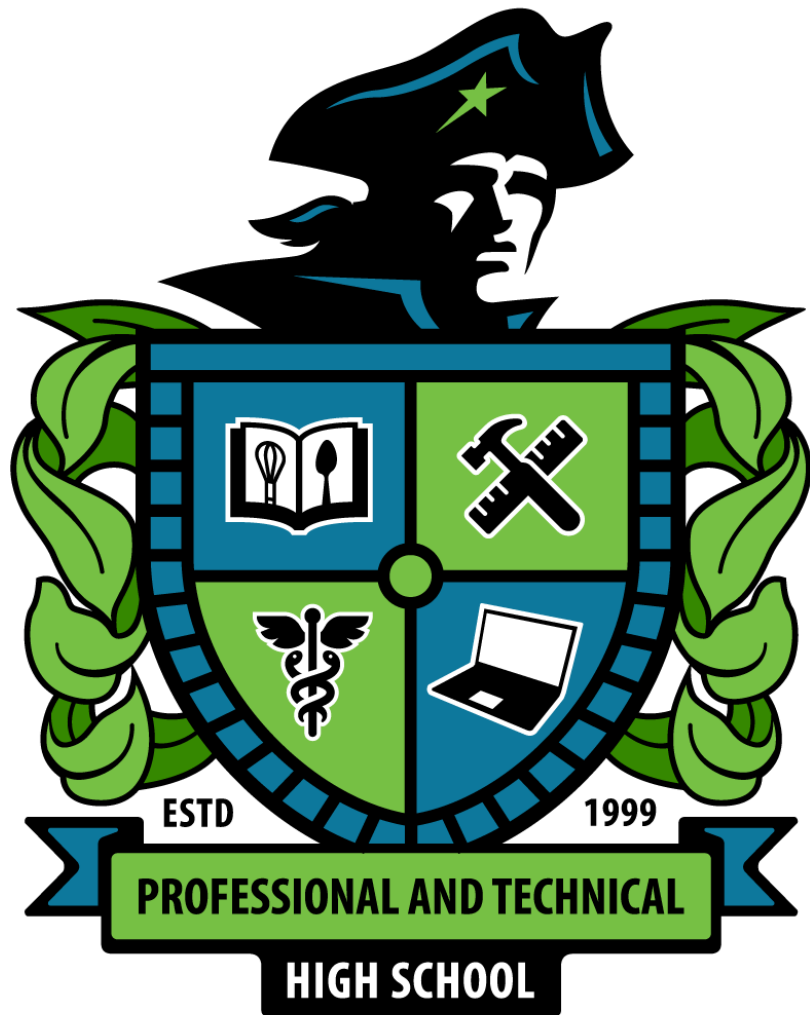
[Period 4 - S2 - 006 - BERNADETTE SHEREE MONROE](#)

10013201

[+ Add a Section](#)

ACADEMIC MONITORING & PATHS STUDENT CONTRACT

- PATHS staff meet consistently to review and discuss student progress and patterns and determine how to best support our students
 - Monitoring of academic data, discipline records, attendance data, etc.
 - Input from multiple levels of leadership, coaches, counselors, teachers, etc.
 - Types of support: Interventions, mentoring programs, tutoring schedules, academic support within the classroom, and more
- PATHS Student Contract
 - Please sign (student and parent) and give to a staff member.



STUDENT SERVICES INFORMATION

FRESHMAN SUMMER
ORIENTATION

WHAT IF I ARRIVE AT SCHOOL BEFORE 6:40AM?

- Bus Loop gates will open at 6:40am and students may go to the Cafeteria or the outdoor patio area.
- The PATHS front office doors will allow car riders to enter the building at 6:40am so that students may go directly to the Cafeteria or the outdoor patio area.
- No students are allowed to go to their locker, go to any classrooms, visit the PATHS bathroom, or hang around in the PATHS hallways before 6:55am.

LATE BUS?

- The dean arrives at the bus loop by 6:30am to let students enter by 6:40am. Students arriving before 6:55am may go directly to the cafeteria.
- If your bus arrives after 6:55am you will:
 - Get a **LATE BUS** ticket from the Dean.
 - Eat quickly in the cafeteria or report to class.
 - Give your teacher the **LATE BUS** ticket so that you will not be counted as late.



If I am a car rider?

- **You will be dropped off in front of the PATHS office.**
- **To be considered on time, you are seated in your first period class by 7:05am.**



CLUBS & EXTRACURRICULAR ACTIVITIES

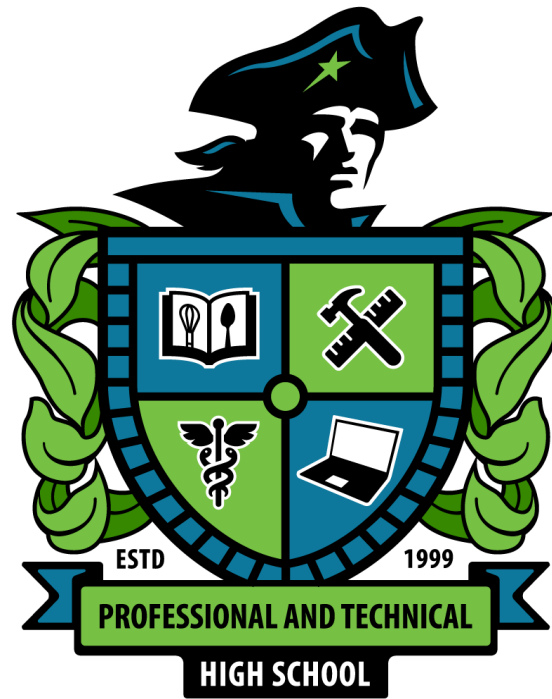
- Battle of the Books
- Black Student Union(BSU)
- Domino Club
- Gay Straight Alliance (GSA)
- Interact Club
- Garden Club
- The Green Team
- HOPE Ambassadors
- HOSA
- Music Club
- Media Center Krew
- National Technical Honor Society(NTHS)
- SkillsUSA
- Spanish Honor Society
- Student Announcements
- Yearbook
- Volleyball Club
- Women's Empowerment Club

PATHS STUDENTS MAY PLAY SPORTS FOR:

- *Gateway High School*
- *Home Zoned High School*



- **Gateway HS athletes may board a bus and go directly from PATHS to Gateway (one bus stop away). The Dean must be notified at least two weeks in advance so that you will be assigned a bus going to Gateway High School.**
- **Home Zone High School Athletes must coordinate bus transportation with the Dean of PATHS well in advance. This takes approximately two weeks to coordinate bus transportation.**



DRESS CODE AND DISCIPLINE

So what DO I wear Monday-Thursday?

- PATHS Uniform Polo – Black, Grey, Green, Blue, or White
- Black Jeans (no rips or holes)
- Khaki pants (not cargo pants)
- Blue pants (not jeans)
- Black pants
- Tennis or Dress Shoes
- Crocs, flip flops, or slides are never allowed on PATHS campus



What do I wear on Friday?

- Blue jeans (no rips or holes)
- School approved Spirit Shirt – 2023-2024 Spirit Shirts have been purchased and all students will receive one the first week of school.
- College or Military shirt



What you wear will need to be
ALWAYS halfway or fully open to
show your uniform polo.



**Hoodie down at all times
on campus – no exceptions**

NO CROCS OR RUBBER SHOES OF ANY KIND...

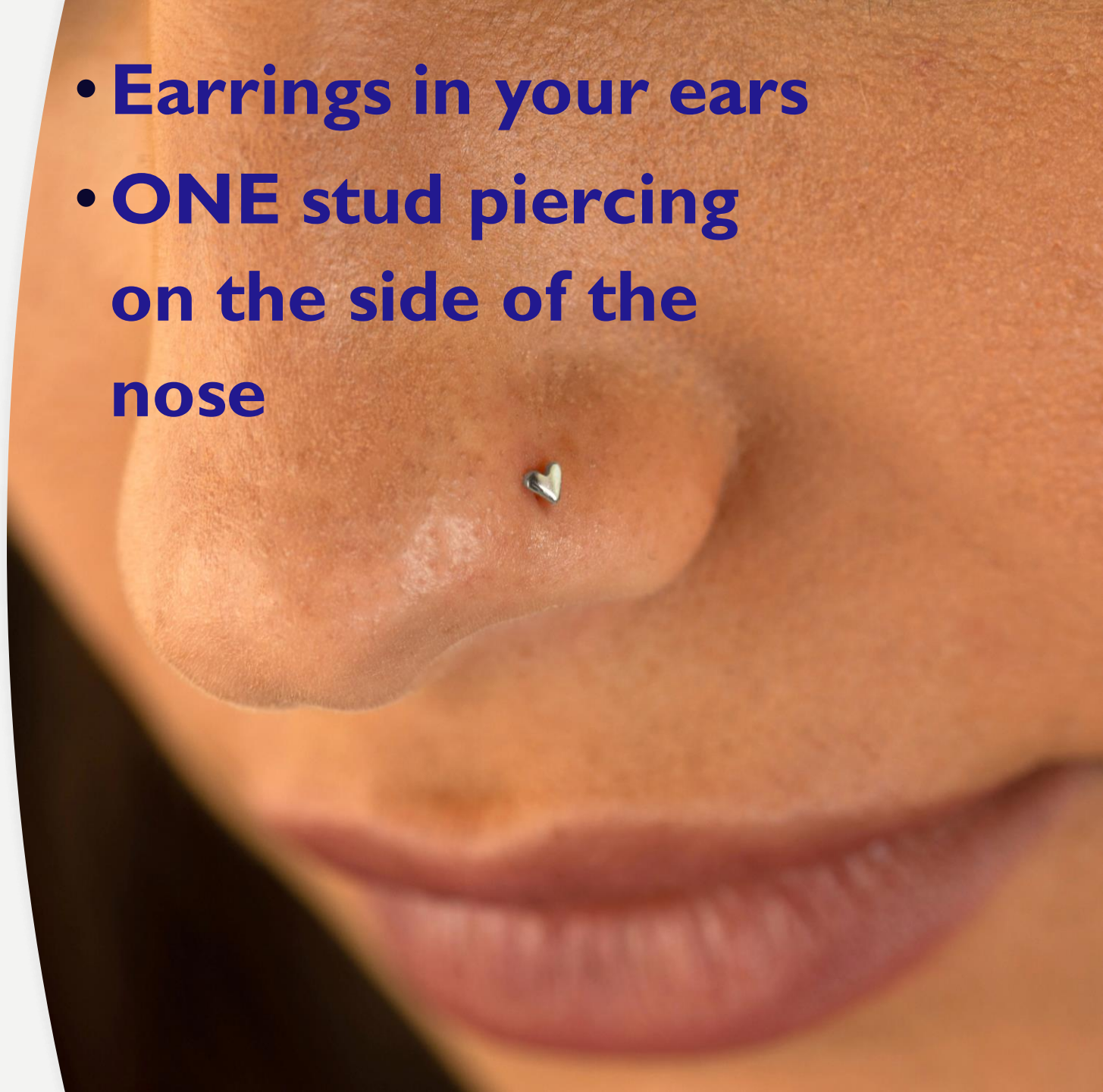


PIERCINGS:

WHAT IF I HAVE MORE PIERCINGS?

- Take them out or put in a clear spacer
- Wear a mask **AT ALL TIMES** unless actively eating or drinking

- **Earrings in your ears**
- **ONE stud piercing on the side of the nose**



CELL PHONES, HEADPHONES, AND SMART WATCHES IN THE CLASSROOM:



All cell phones, headphones, and smart watches go in in classroom cell phone wall holder upon entrance.

- **Students using cell phone or smart watch during class will have it confiscated by the dean for the entire day.**
- **1st offence – student may pick up item at end of day**
- **2nd offence – parent must pick up item from office**

***WHERE MAY I
GO DURING
LUNCH EVERY
DAY EXCEPT
WEDNESDAY?***



Cafeteria



Media Center



Patio area with picnic tables



Gazebo after 10:30am



Basketball court after 10:30am



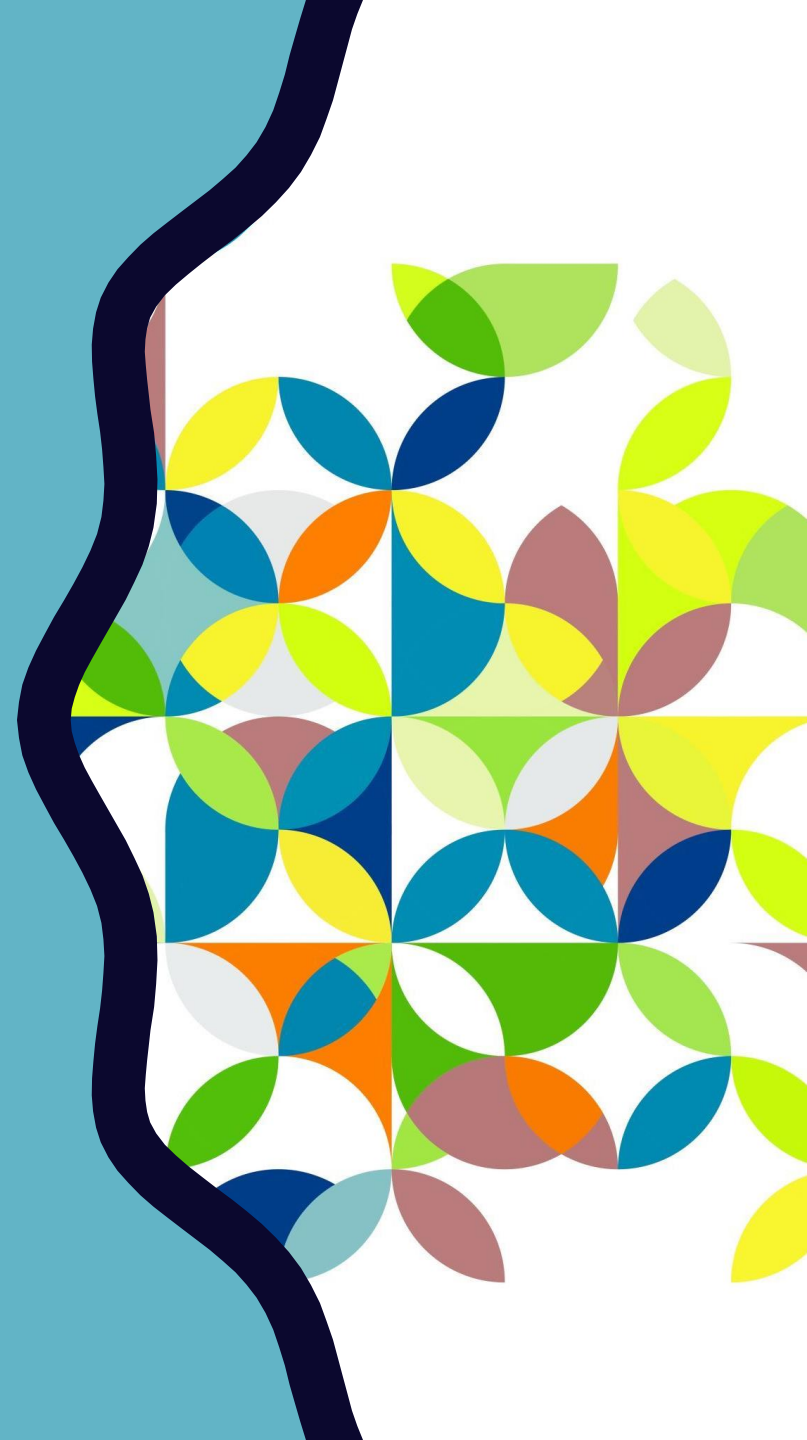
Grassy areas on the side and front of the basketball court after 10:30am



Teacher's classrooms **FOR TUTORING** with a pass written from the teacher with the date and your name on it.

WIN WEDNESDAY/ INTERVENTION

**DURING LUNCH STUDENTS ARE
REQUIRED TO GET EXTRA
HELP/TUTORING IN A CLASS
WHERE THEY ARE STRUGGLING.**





WHERE MAY I GO DURING LUNCH ON WIN WEDNESDAY?

- The cafeteria
- The patio picnic tables
- Teacher's classroom with a pass with the date and your name written on it.
- There will be no sports allowed during Wednesday.

**TO ENSURE THE SAFETY OF EVERYONE ON CAMPUS,
YOU MUST HAVE YOUR SCHOOL ISSUED ID VISIBLE
AT ALL TIMES:**

*** WORN ON A LANYARD AROUND YOUR NECK**

*** CLIPPED TO YOUR SHIRT**

Wear it with Patriot PRIDE.

It should not be in your...

- **Pocket**
- **Backpack**
- **Wallet**



WHAT IF I FORGOT MY ID?

If you lost it or don't have it that day you will go to the office and get a temporary ID tag:

- 1st and 2nd offense – Lack of Identification (LAI) violation and 30 minutes of lunch detention
- 3rd and 4th offense – LAI violation and one hour of lunch detention
- 5th – 7th offense – LAI violation and two hour After School Detention
- 8th – 10th offense – LAI violation and Saturday Detention



**TARDIES TO
CLASS (T) ARE
TRACKED AND
RESET TO ZERO
EACH SEMESTER:**

1st - 3rd tardy to class: Tardy to Class violation (T) and no consequence

4th – 5th tardy to class: (T) violation, referral, and 30 minute lunch detention

6th – 7th tardy to class: (T) violation, referral, and one hour lunch detention

8th – 10th tardy to class: (T) violation, referral, and two hour after school detention

10th tardy to class: (T) violation, referral, parent meeting, and Saturday Detention

What is a Tardy to School (TS)? You arrived at the office @ 7:05am or after.

TARDIES TO SCHOOL RESET EACH SEMESTER:

1st – 5th tardy – Tardy to School violation (TS) and no consequence

6th -7th tardy – (TS) violation, referral, and 30 minutes of lunch detention

8th – 10th tardy – (TS) violation, referral, and one hour lunch detention

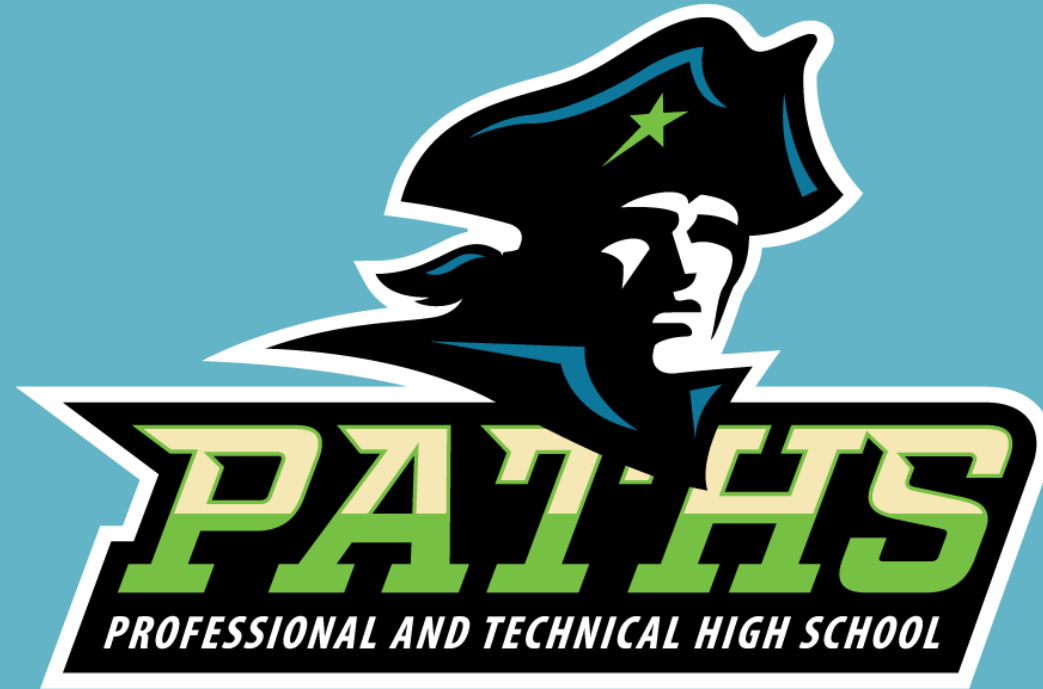
11th - 14th tardy – (TS) violation, referral, parent conference, and after school detention

15th – 17th tardy – (TS) violation, referral, and Saturday Detention

18th tardy – Parent conference with Attendance Contract

NEED A SCHEDULE CHANGE?





**THANK YOU FOR ATTENDING
OUR FRESHMAN ORIENTATION**